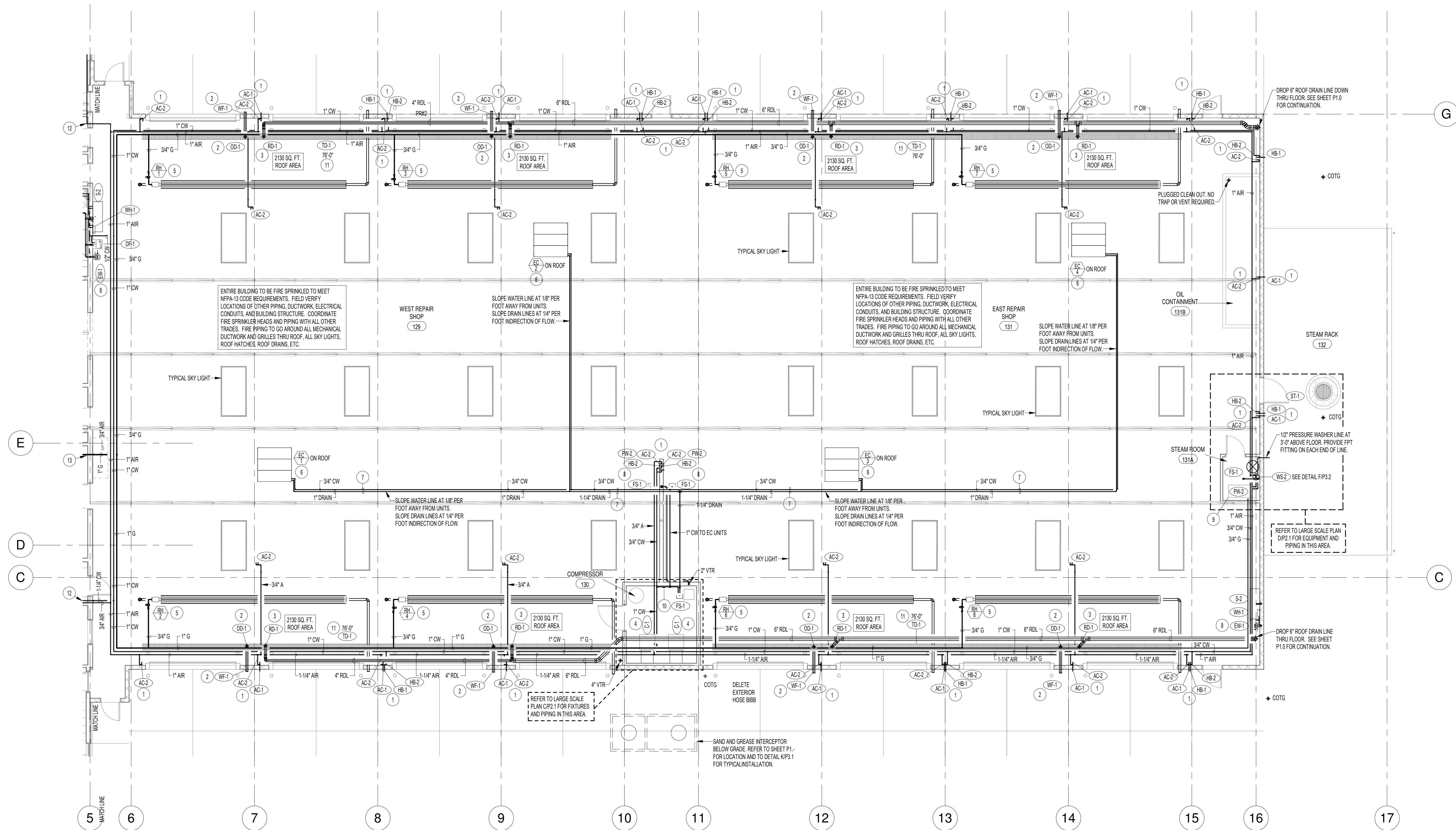
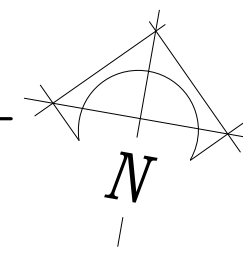


11/22/2019 10:37:14 AM Kenworth Ogden (M&P)\_detached.rvt



**PLUMBING FLOOR PLAN - PART 2**

SCALE: 1/8" = 1'-0"

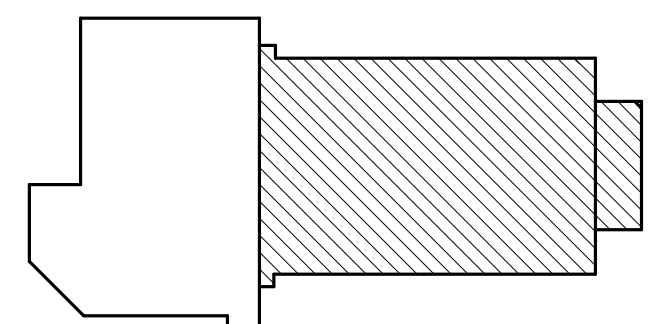


**PLAN NOTES:**

- 1 PROVIDE AND INSTALL COMPRESSED AIR OUTLET(S) AND/OR HOSE BIB(S) AS SPECIFIED. AIR OUTLETS TO BE MOUNTED AT 4'-0" ABOVE FLOOR ON INTERIOR OF BUILDING AND 3'-0" ABOVE GRADE ON EXTERIOR OF BUILDING. REFER TO DETAIL CP3.1 FOR TYPICAL INSTALLATION OF AIR OUTLETS. MOUNT COLD WATER HOSE BIBS AT 2'-0" ABOVE FLOOR ON INTERIOR OF BUILDING AND 1'-0" ABOVE GRADE ON EXTERIOR OF BUILDING. REFER TO DETAIL EP3.2 FOR TYPICAL INSTALLATION OF HOSE BIBS IN SHOP AREA. RISE 3/4" AIR AND 3/4" COLD WATER LINE UP WALL AND CONNECT TO CORRESPONDING OVERHEAD PIPING.
- 2 PROVIDE AND INSTALL OVERFLOW DRAIN AS SPECIFIED. CONNECT 4" DRAIN LINE AND RUN THRU EXTERIOR WALL TO WITH WALL FLANGE AS SPECIFIED. MOUNT WALL FLANGE AS HIGH AS POSSIBLE. COORDINATE LOCATION WITH BUILDING STRUCTURE. OTHER PIPING AND DUCTWORK. GRADE ROOF DRAIN AND OVERFLOW DRAIN LINES AT 1/8" SLOPE PER FOOT IN DIRECTION OF FLOW. KEEP PIPING AS HIGH AS POSSIBLE.
- 3 PROVIDE AND INSTALL ROOF DRAIN AS SPECIFIED. CONNECT 4" DRAIN LINE AND RUN THRU JOIST SPACE AS SHOWN. COORDINATE LOCATION WITH BUILDING STRUCTURE. OTHER PIPING AND DUCTWORK. GRADE ROOF DRAIN AND OVERFLOW DRAIN LINES AT 1/8" SLOPE PER FOOT IN DIRECTION OF FLOW. KEEP PIPING AS HIGH AS POSSIBLE.
- 4 AIR COMPRESSORS FURNISHED BY OWNER AND INSTALLED BY CONTRACTOR. REFER TO DETAIL LP3.2 FOR TYPICAL PIPING CONNECTIONS. FIELD VERIFY WITH MANUFACTURER'S RECOMMENDATIONS FOR EQUIPMENT PROVIDED.
- 5 RADIANT TUBE HEATERS PROVIDED AND INSTALLED BY MECHANICAL CONTRACTOR. PLUMBING CONTRACTOR TO ROUGH-IN AND CONNECT 3/4" GAS LINE (2 ps) COMPLETE WITH PRESSURE REGULATOR, SHUT-OFF VALVE AND FLEXIBLE HOSE FOR CONNECTION. REFER TO DETAIL AP2.2 FOR TYPICAL PIPE CONNECTIONS AND TO SHEET M2.2 FOR EQUIPMENT INSTALLATION.
- 6 RISE 3/4" COLD WATER LINE UP THRU ROOF AND CONNECT TO EVAPORATIVE COOLER. GRADE WATER LINE AT 1/8" PER FOOT AWAY FROM EVAPORATIVE COOLERS. DROP 1" DRAIN LINE FROM UNIT DOWN THRU ROOF AND RUN THRU JOIST SPACE AS SHOWN. GRADE DRAIN LINE AT 1/4" SLOPE PER FOOT IN DIRECTION OF FLOW BACK TO FLOOR SINK.
- 7 RUN DRAIN LINES AND COLD WATER LINE THRU JOIST SPACE. COORDINATE ROUTING WITH BUILDING STRUCTURE. OTHER PIPING AND DUCTWORK. SLOPE DRAIN LINES AT 1/4" PER FOOT BACK TO FLOOR SINK.
- 8 PROVIDE AND INSTALL WALL MOUNTED EMERGENCY EYEWASH STATION AS SPECIFIED. CONNECT TO 1/2" COLD WATER LINE AND TO 1-1/2" WASTE AND VENT PIPING. REFER TO DETAIL DP3.2 FOR TYPICAL INSTALLATION.
- 9 PRESSURE WASHER PROVIDED AND INSTALLED BY VENDOR. PLUMBING CONTRACTOR TO ROUGH-IN AND CONNECT 3/4" GAS LINE (2 ps) COMPLETE WITH PRESSURE REGULATOR, SHUT-OFF VALVE AND FLEXIBLE HOSE FOR CONNECTION. REFER TO DETAIL DP3.1 FOR TYPICAL GAS LINE CONNECTION. PLUMBING CONTRACTOR TO ALSO ROUGH-IN AND CONNECT 1" COLD WATER LINE COMPLETE WITH SHUT-OFF VALVE AND FLEXIBLE HOSE FOR CONNECTION. FIELD VERIFY EXACT LINE SIZES AND LOCATION WITH EQUIPMENT PROVIDED.
- 10 DROP 1" COLD WATER LINE DOWN TO 4'-0" AND PROVIDE SHUT-OFF VALVE AND DRAIN VALVE FOR EVAPORATIVE COOLERS LOCATED ON ROOF. REFER TO DIAGRAM DP3.1 FOR PIPING CONNECTIONS. RUN 1" DRAIN LINE TO FLOOR SINK.
- 11 PROVIDE AND INSTALL PRE-FABRICATED TRENCH DRAIN AS SPECIFIED. REFER TO SHEET P1.3 FOR DRAIN LENGTHS AND TO DETAIL GP3.1 FOR TYPICAL INSTALLATION.
- 12 DROP PIPING DOWN WALL AND EXTEND INTO CEILING SPACE OF MAIN LEVEL. SEE SHEET P1.1 FOR CONTINUATION.
- 13 DROP GAS LINE DOWN AND EXTEND THRU WALL ABOVE LOWER ROOF. SEAL WALL PENETRATION WATER TIGHT. REFER TO SHEET P1.1 FOR CONTINUATION.

**ALL COMPRESSED AIR PIPING THROUGHOUT THE BUILDING TO BE BID AS ALTERNATE #1.**

**KEY PLAN**



**GENERAL NOTES:**

- A- THE CONTRACTOR SHALL CHECK AND VERIFY ALL DIMENSIONS AND CONNECTIONS ON THE JOB SITE. ALL WORK SHALL BE EXECUTED FROM MEASUREMENTS TAKEN AT THE SITE.
- B- THE MECHANICAL CONTRACTOR SHALL BE RESPONSIBLE TO INSURE PROPER CODE CLEARANCES FOR ELECTRICAL AND MECHANICAL ACCESS WHEN INSTALLING ANY EQUIPMENT SUPPLIED BY THE MECHANICAL CONTRACTOR.
- C- IT IS CRITICAL THAT THIS CONTRACTOR COORDINATE EQUIPMENT LOCATIONS WITH PIPING, DUCTWORK, ELECTRICAL CONDUIT AND BUILDING STRUCTURE TO INSURE CODE COMPLIANCE.
- D- CEILING DIFFUSERS ARE SHOWN IN APPROXIMATE LOCATIONS. REFER TO LIGHTING PLANS AND REFLECTED CEILING PLAN FOR EXACT LOCATIONS.
- E- DUCT DIMENSIONS CALLED OUT ON DRAWINGS ARE INSIDE FREE AREA DIMENSIONS. ACoustICAL DUCT LINER ARE TO BE ADDED TO OVERALL MEASUREMENTS.
- F- ALL DUCTWORK AND PIPING WHICH PASSES THRU FIRE RATED WALLS TO BE FIRE STOPPED WITH APPROVED FOAM OR SEALANT. REFER TO SPECIFICATIONS FOR APPROVED MANUFACTURERS.

**Engineered Systems Associates**  
 1355 EAST CENTER  
 POCATELLO, IDAHO 83201  
 PHONE: (208) 233-0501  
 FAX: (208) 233-0529  
 EMAIL: esa@engsysllms.com  
 ESA JOB NUMBER: 19035

**nw architects.p.a.**  
 ARCHITECTURE / PLANNING / INTERIORS  
 SCOTT L. NELSON, A.I.A., KEVIN R. BODILY, A.I.A., JAMES H. WYATT, A.I.A.  
 990 JOHN ARBON PARKWAY, P.O. BOX 2212 - IDAHO FALLS, IDAHO 83402-2212  
 (208) 208-5322-8779 (208) 208-5322-8785 (208) 208-5322-8786

A NEW BUILDING FOR:  
**KENWORTH SALES COMPANY INC.**  
 1750 SOUTH 1350 WEST  
 NEW HAVEN, UTAH  
 PLUMBING PLAN - PART 2

PROJECT:  
 REVISIONS:

PROJECT NO.: 16066  
 DATE: NOVEMBER 2019  
 DRAWN BY: M Jensen  
 CHECKED BY: D Sudweeks  
 DRAWING NO.:

**P1.2**